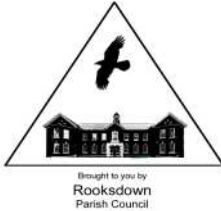
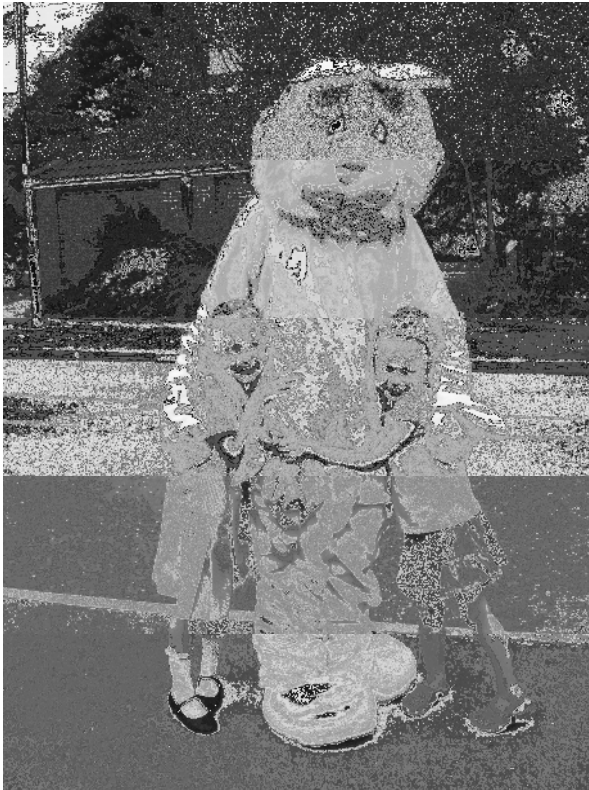


ROOKSDOWN REPORTER

Issue 5



Summer 2010



Delivered by the Rookdown Community Association

EDITORIAL

Welcome to the fifth edition of the Rooksdwn Reporter, I hope you enjoy it. Do you have any issues, stories or advertisements for the next issue of the Rooksdwn Reporter?

If so, please get in touch: editor@rooksdwn.org.uk.

As well as the Rooksdwn Reporter, there are a number of ways to find out what is happening in Rooksdwn:

- Occasional Rooksdwn articles in the Gazette.
 - There is also a website : www.rooksdwn.org.uk
 - There is a Rooksdwn Facebook
- There are notice boards around Rooksdwn,
- Situated by the telephone box Gillies Drive,
 - The side of the Community Hut next to Mill Road Park,
 - Park Prewett Road next to the Rooksdwn Doctors Surgery
 - Mill Road pathway

Note from the Editor - Jayne

Parking continues to be an issue in all areas of Rooksdwn. I have noticed that there are larger vans and lorries now parking on the paths and grass verges on various parts of the estate. Please park considerately and do not obstruct pavements or access to other properties. Avoid parking close to junctions which can obscure the sight-lines and increase the risk of accidents between cars coming into and out of side-roads. There are a lot of children and people using pushchairs and disability scooters who are having to walk on the road around badly parked cars.

I have also seen a few people walking across the A339. Please use the bridge as car drivers can't see you when they are coming around the corner. You can't be in that much of a hurry.

I would also like to welcome Rooky the Rooksdwn Rabbit to Rooksdwn. He is the newest member of the Community Association and is hoping to move into the Rooksdwn Village Hall in the Autumn next year.

DISCLAIMER: The views expressed in the Rooksdwn Reporter are not necessarily those of the group. We do not accept liability nor warrant any product or service advertised in the Rooksdwn Reporter.

ROOKSDOWN PARISH COUNCIL

Charles Miller—Chairman

The recent annual parish meeting, although sparsely attended, produced some lively discussions on subjects including car parking and the provision of shops. If you have any points you wish to raise with the Parish Council, you don't need to wait for next year but are welcome to come to any of the council's regular meetings in Saxonwood school hall. (See Page 15 & noticeboards for dates).

You may have noticed that two seats have been installed on the green by the Mill Road roundabout and seem to be quite popular; we intend to install further seats in other areas of the parish once suitable sites have been identified – typically these will be near the main footpaths; if anyone wishes to put forward a location for consideration, please do so. Parish Councillors are also in discussions with the Borough Council and the developers to agree sites for the provision of litter bins in the unadopted parts of the parish.

The Parish Council has been having regular meetings with Taylor Wimpey, the lead developer of the new parts of Rooksdown, and we have been able to pass on residents' concerns to them; these meetings have been helpful and, where possible, they have been able to make changes to the benefit of the residents of the areas still under development.

The Council has also met with planning officers from the Borough to discuss the future development of the old golf course site – we will provide input to the process to ensure the best outcome for current residents and those who will eventually inhabit the new site.

The Council are also investigating the provision of grit bins to enable us to alleviate a possible repeat of last winter's severe weather – these will be in place before next winter.

The Parish Council has a website, www.rooksdwn.org.uk. If you need information about the Council, Community Association, local policing and forthcoming events, or even the history of Rooksdown, then the website is a good place to start.

Charles

Chairman, Rooksdown Parish Council

Cllr Karen Cherrett, Rooksdown Borough Councillor

The frequently asked question and answer approach last time seemed to go down well so I thought I'd continue it for this issue.

When will the Community Centre open?

The tender process to appoint a contractor to undertake the Community Centre development is under way. We remain on course to start preparing the site this autumn and aim to complete the build in 2011.

Can we get litter bins for the footpaths and greens in Limes Park?

Whilst this area is not yet adopted by the council, the Borough Council has agreed to investigate the placement of litter bins in Limes Park. I expect to see this happen this summer.

Are the roads in Limes Park going to be adopted this year?

Normally the roads are not adopted by the County Council until the development is complete and a year of snagging has taken place (to see if there are any defects the developer must fix). However we hope to have Limes Park roads and footpaths adopted in sections rather than wait for everything to be complete. Work is under way in Peggs Way, Harness Court, Rooksdown Avenue and the neighbouring roads, to try and get this area complete and ready for adoption this year.

How do I get graffiti removed?

Thankfully this is not a big problem in Rooksdown but we need to remove any graffiti that appears quickly so people get the message that such damage will not be tolerated. Some members of the Neighbourhood Watch Group have graffiti kits and can remove small areas of damage. But please report all graffiti to the council so that it can be photographed and cleaned off. You can report it using online forms or calling 01256 845845.

How do I deal with noise and nuisance?

With the summer months and lighter nights coming early, remember that open windows and outdoors events will help noise carry and this may be upset neighbours. Please be considerate when playing music in or out of doors – especially after dark. It often helps to avoid upset if you let neighbours know if you are planning a party. You can report incidents of noise or nuisance to the Police via 101 or the Council via 01256 845845. However, one-off or occasional incidents of noise will not normally be enough

Cllr Karen Cherrett, Rooksdown Borough Councillor

to lead to enforcement so it's often better to talk to neighbours first.

When will the footpaths at Rooksdown Avenue connect to the bus stops?

A request has gone in to provide a tarmac footpath to the bus stops on Rooksdown Avenue (currently accessed via the grass verge). The planning and highways engineers have begun consultation on proposals to replace some of the grass verge with tarmac pavement and make it easier and safer to use the stops without having to walk in the road or along the grass.

Will the road at the end of Highpath Way be opened this year?

It is fully expected that the road to connect the new and older parts of Highpath Way will open this summer allowing access through to Spoonwood Close and Peggs Way.

When will the footpath to the footbridge at English Wood be opened?

As part of the works to open the road through Highpath Way, it is expected that the footpath will be completed and green area landscaped this summer. This will mean the footpath can be opened from the footbridge at English Wood enabling residents to use the path which cuts through Highpath Way, around Trenchmead Gardens and onto Peggs Way.

These will be significant changes to roads previously not open to through traffic. Road users and pedestrians will need to take care as foot, cycle and road traffic starts to use the new access routes.

Will Rooksdown get a primary school?

The County Council announced four new primary schools for Basingstoke and Deane Borough in May, but it remains non-committal on Rooksdown. A school always has been planned but the pace of development has been much slower than expected. Demand for primary places can currently be met by existing schools in neighbouring Parishes. The County Council does not rule-out the possibility for future years but any decision will be subject to demonstrating a need and demand for places in locations that cannot be served by existing schools with surplus places.

Cllr Karen Cherrett, Rooksdown Borough Councillor

I've been told I have to contribute to a Community Trust. What does this mean?

As part of the agreement with the developer's at point of purchase (which forms part of the purchase contract) residents of Limes Park have been paying a community levy and this levy will be re-instated this year. The levy has not been fully implemented to date, as the community trust needed to use and distribute the funds raised by the levy had not been set up. The Borough Council, Parish Council and Rooksdown Community Association are currently in discussions with the developers and Homes and Communities Agency (the ultimate landowner for the Park Prewett site) to progress setting up the planned community development trust for Rooksdown. It is expected that Rooksdown Parish Council will take on the role of managing the community development trust, which will be set up under a joint partnership agreement with the Rooksdown Community Association.

The objectives of the trust include to:

- develop community activities
- improve community facilities
- generate community safety activities such as Neighbourhood Watch
- work with the community to energise community spirit and focus on working with local residents to help bring about positive change and undertake activities local people want for the area.

Examples of activity the trust could manage would include providing activities and services at the new community centre, and various other initiatives. Basingstoke and Deane Borough Council have recently secured planning permission for the new community centre and will be starting construction before the end of this calendar year. The facility will provide a focus for all sorts of community development activities and provide a basis for meetings of the Community Development Trust.

The funding from this levy will help to generate income for the various community activities that are proposed and help finance the introduction of various initiatives within the community. There will be opportunity for residents and groups to influence how the trust is spent by participating in consultation or by being members of the Parish and Community groups.

Cllr Karen Cherrett, Rooksdown Borough Councillor

Going forward, the Parish Council and Community Association will be developing a programme of community activities, and will be setting up a meeting in the near future, as an opportunity for local residents to put forward their ideas for these activities. The date of this meeting will be notified in due course. The funds from the levy collected to date have been held in a trust account waiting for the trust to be set up.

Karen **Rooksdown Borough Councillor,**

ROOKSDOWN NEIGHBOURHOOD WATCH

Several Neighbourhood Watch Schemes have been set up in Rooksdown and it is hoped that more schemes will follow .

Sarah Ratcliff is going to be helping arrange a meeting for all the Neighbourhood Watch Groups in Rooksdown in the next few months, so that they can all work together. If you are interested in attending, helping or running a Neighbourhood Watch scheme in Rooksdown please give her a call.

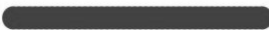
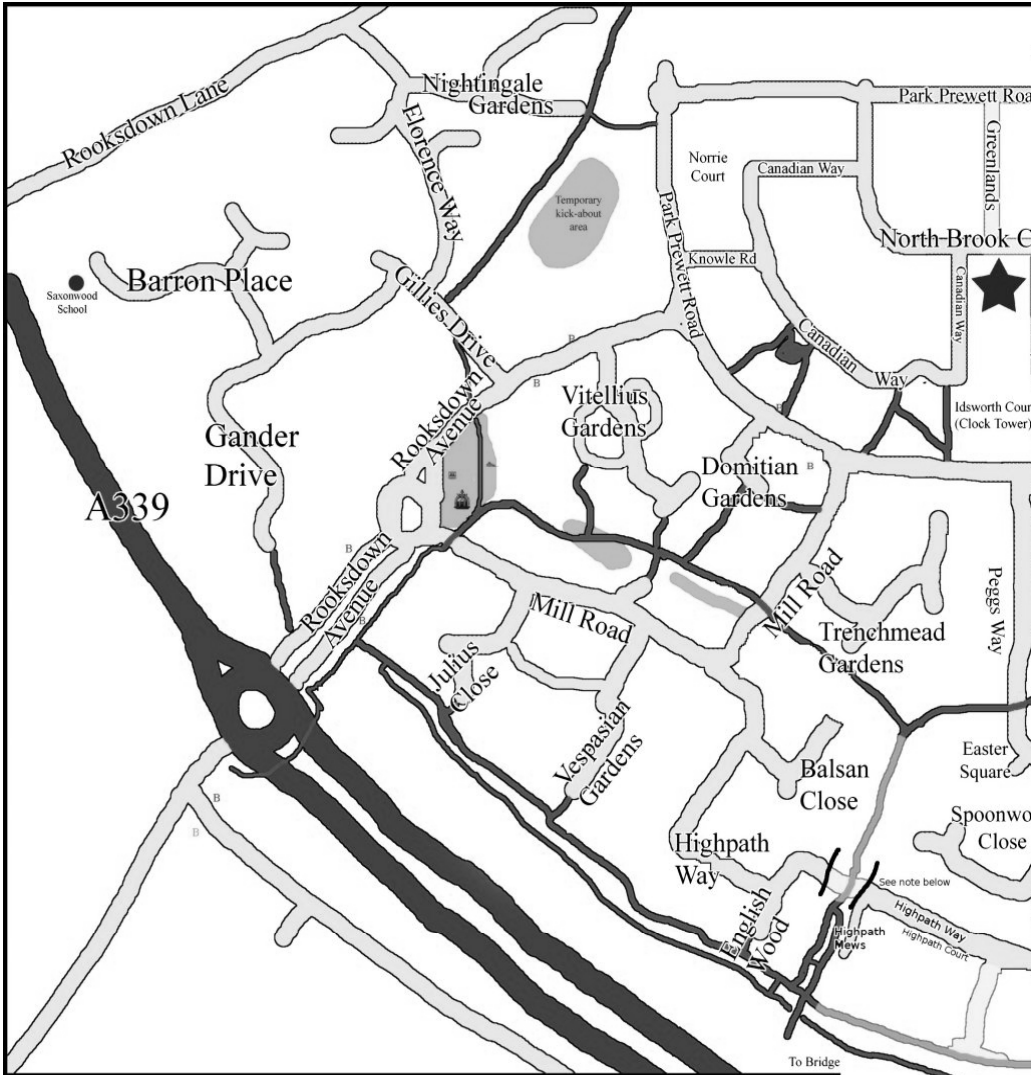
Telephone: 01256 845700 Email: sarah.ratcliff@basingstoke.gov.uk

LITTER BINS

Following input from members of the public and the RPC regarding litter bins on the unadopted area of the estate. A walk round with a BDBC Environment Officer resulted in nine locations being deemed suitable for placement of litter bins. Six bins are to be funded by B&DBC and the RPC are hoping to provide the other 3, with installation taking place late Jun/July. Permission has been received from TW and HCA to have these bins installed.

The current agreed locations are: Norrie Court "bus shelter", Hobbs Court, Elder Road green area, Pump House Way small green area, Junction of Pump-house way & Mailing Way & Path in woods – this would be a sand weighted litter available to be moved if necessary. Owen Way/Harness Court path crossing - this would be a sand weighted litter available to be moved if necessary. Crondall Terrace/Moths Grace crossing point, Water Tower Way "bus shelter", Canadian Way "bus shelter", Canadian Way " bus shelter"

Colin **Vice-Chair Rooksdown Parish Council**



A339 Newbury to Basingstoke



(Under construction)

Local Roads



Main Footpaths / Cycleways



Site of proposed community centre

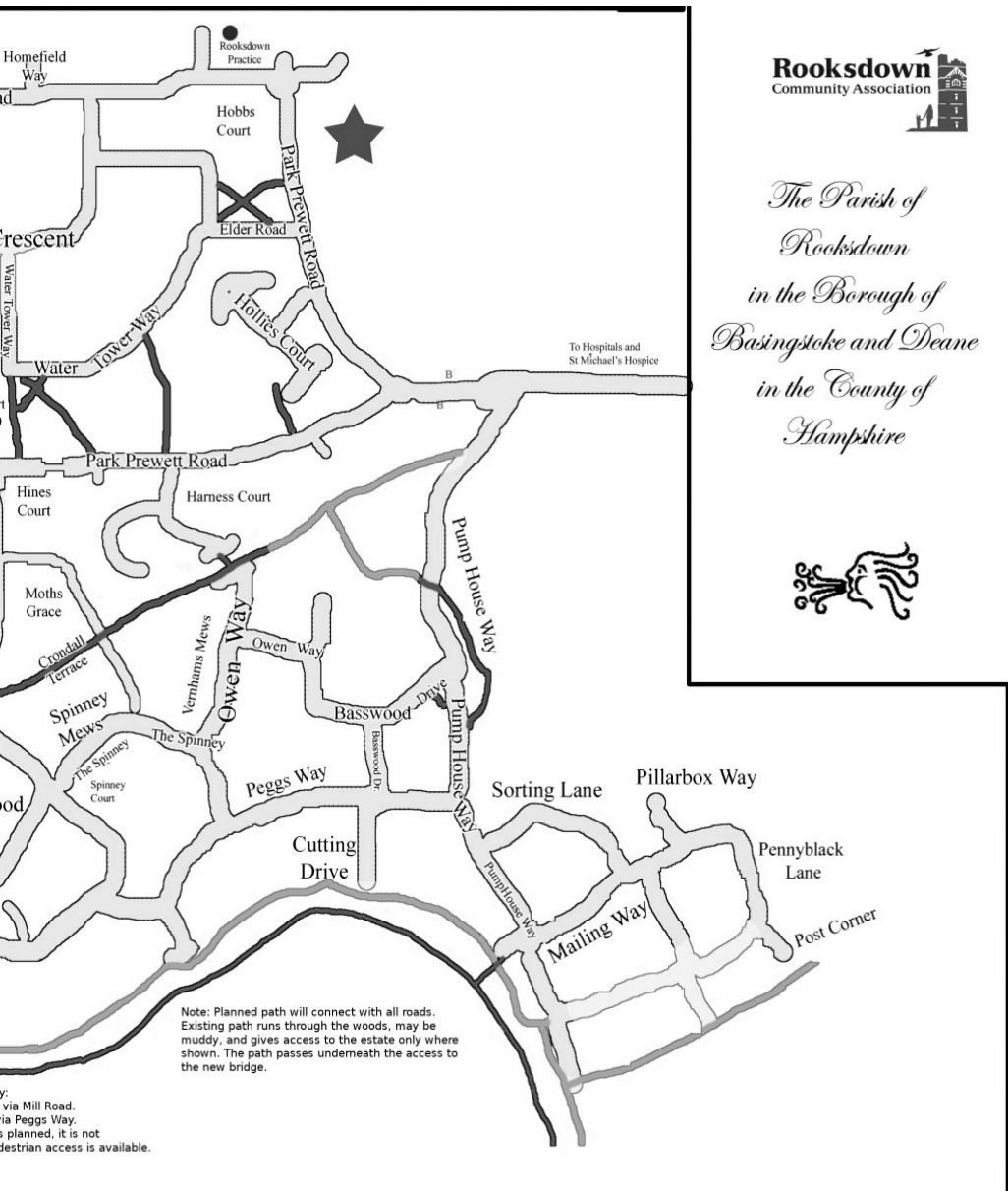


Site of Wessex Christian Fellowship church

Note: Access to Highpath Way
Access to numbers 1 to 43 is
Access to numbers 44 up is v
Although a connecting road is
yet built and only indirect per

Street Plan

Rookdown C



of Rooksdown
Community Association

Issue: 2010/01

SAXON WOOD SCHOOL EXERCISEATHON

SATURDAY 10 JULY

9.00AM TO 3.00PM

SAXONWOOD SCHOOL, BARRON PLACE

There will be hour long sessions including:



Boxercise
Aerobics
Salsa
Circuit Training
and many more



£5.00 per session all monies raised goes to Saxon Wood School
Please call 01256 356635 for further information

WESSEX CHRISTIAN FELLOWSHIP CHURCH

Despite slow progress with certain "parties", the whole process of Wessex Christian Fellowship moving to the old Hall in Rooksdown is still in progress.

The owners of the old Park Prewett Hall, namely Wimpey, are still in the process of selling Park Hall to Wessex. We also have the backing of the Homes and Community Agency (formally known as English Partnership) to ensure the deal goes through.

We seem to be going through the same slow process as the Rooksdown Village Hall but I am confident that our project will go ahead. And who knows we may open both the centres over the same weekend in 2011

Bob Smith

HAMPSHIRE HEALTHCARE CENTRE at Basingstoke Hospital
Easy access to a NHS nurse, doctor or dentist from 8am to 8pm
7 days a week.

Prebookable and same day treatment available. Appointments are not always necessary.

Tel: 01256 477720 www.hampshirehealthcarecentre.nhs.uk

ROOKSDOWN COMMUNITY DEVELOPMENT OFFICER - Lucy Mackmin

There have been some exciting things happening in Rooksdownd since January. I have been working closely with Rooksdownd Community Association who have been busy organising events for you all.... Some of you may have joined the Woodland Walk which was held on 8th May, but if you missed it then make sure you put Saturday 10 July in your diary for the annual Rooksdownd Summer Fayre, which promises to be a great event for all the family.

Rooksdownd Community Association is currently looking for new members to join so if you can spare a couple of hours and would like to support your local community please do get in touch.

With the World Cup in full swing it's time to talk football! More than 20 young people joined in two Easter holiday sessions with CSA07 Football on Mill Road Green. Thanks go to Sentinel Housing Association who kindly sponsored the event by donating fruit and water for each session. The event was deemed such a success Rooksdownd Community Association is going to run more sessions during the summer holidays, see the back page for more information!

Working with Sarah Ratcliff, the Community Safety Patrolling Officer, we are also hoping to organise an event around Peggs Way during July or August for local residents, so keep an eye out for more information.

If there are any other activities you would like to see in Rooksdownd or if you would like to get involved in your community please contact me

Lucy

Email Lucy.mackmin@basingstoke.gov.uk Telephone: 07775413251

WALK 4 LIFE - WALKING THE WAY TO HEALTH

Come and join our walk on 23 June at 7pm meet us at the Haemophilia Centre Car Park, Aldermasten Road, opposite St Michael's Hospice (no need to book). The walk leaders are Julia Phillips & Miriam Elliot.

(Please wear clothes and shoes suitable for the weather and bring a bottle of water. A Brisk walk of about an hour.)

ROOKSDOWN BEAT PC 2521 IAN HOILE

I am glad to report that overall crime figures remain low in Rooksdown, however there has been a big increase in reports of Anti-Social Behaviour (ASB). These ASB reports are as varied as the locations. The main concern from residents is that there are large numbers of children/youths gathering in the street and they are generating a lot of noise and nuisance. Vehicles are being damaged by being hit with footballs and they are also being scraped by careless cyclists. Quite often the children are gathered outside addresses from the opposite end of the estate to where they live and are therefore not having any parental supervision. I would ask all parents to make sure that they know where their children are at all times and to consider what they are doing and who with. I am also concerned as to how late young children are allowed to play in the streets by their parents. Whilst I appreciate that children like to have their freedom there is balance between this and their welfare needs. I will be escorting children home and will be asking their parents to explain why their children are out so late.

Residential parking throughout Basingstoke is at a premium and Rooksdown is no different. There are not enough parking spaces for vehicles but owners must take more responsibility to park safely and considerately. I will be targeting the areas of Rooksdown where the parking issues are more prevalent. So far I have relied upon common sense and good will to solve issues will but sadly this has not worked in all cases. I will therefore be issuing Fixed Penalty Notices to vehicles which are causing an obstruction or badly parked. I would like to remind drivers of the following extracts from the Highway Code:

242

You **MUST NOT** leave your vehicle or trailer in a dangerous position or where it causes any unnecessary obstruction of the road.

243

DO NOT stop or park anywhere you would prevent access for Emergency Services opposite or within 10 metres (32 feet) of a junction, except in an authorised parking space where the kerb has been lowered to help wheelchair users and powered mobility vehicles in front of an entrance to a property on a bend where you would obstruct cyclists' use of cycle facilities

Rooksdown Safer Neighbourhoods Team : Telephone: 0845 0454545

PC 2521 Ian Hoile: ian.hoile@hampshire.pnn.police.uk or

PCSO Tarren Porter: tarren.porter@hampshire.pnn.police.uk

COMMUNITY SAFETY PATROL OFFICER SARAH RATCLIFF

New community safety patrol officers have been placed into targeted areas around Basingstoke and Deane to help make the borough a safer place to live. This is a new joint service between Basingstoke and Deane Borough Council and Hampshire County Council.

Sarah Ratcliff is the officer for Rooksdown and Popley West and will be working closely with PCSO Tarren Porter and PC Ian Hoile to help deter anti-social behaviour. Collectively they are Rooksdown's Safer Neighbourhood Team. Sarah will be helping to tackle issues such as graffiti, dog fouling, littering and underage drinking, and any other issues that affect the quality of life in Rooksdown and Popley West.

If you do have any issues you wish to discuss with CSPO Sarah Ratcliff please ring 01256 845700 or stop her for a chat if you see her out and about. Alternatively you can email Sarah at sarah.ratcliff@basingstoke.gov.uk

If you wish to report an incident to the police that is non emergency please use the 101 number which will report the incident and allow the Safer Neighbourhood Team to build up a picture of problems in the area. Alternatively you can ring 0845 0454545. For emergency calls please ring 999.

ROADS AND STREET LIGHTING

Those of you living on the Southern side will have noticed final repairs to street lighting on -going and iron work being raised.

The following roads are in the process of having the top dressing, pavements and street furniture completed: Park Prewett Road from Mill Road to the junction with the Hospital Road including building of the sump buster, Owen Way, Basswood Drive, Peggs Way as far as Easter Square and possibly Cutting Drive. To follow in the Autumn will be Spoonwood Close, Highpath Way and Park Prewitt Road around the Norrie Court area.

Colin **Vice-Chair Rooksdown Parish Council**

USEFUL ROOKSDOWN CONTACT DETAILS



Parish Council	www.rooksdowndown.org.uk Email: council@rooksdowndown.org.uk or rooksdowndownclerk@thedarleys.co.uk Tel: 01256 356701 Ron, Parish Clerk
Community Association	www.rooksdowndown.org.uk/community Tel: 0771 7599819
Borough Councillor	Karen Cherrett Email: cllr.karen.cherrett@basingstoke.gov.uk
County Councillor	Stephen Reid Tel: 01256 320860 Email: Stephen.reid@hants.gov.uk
Police	PC 2521 Ian Hoile & PCSO Tarren Porter Tel: 0845 045 4545
Neighbourhood Watch	Paul Green Email: paul.green@basingstoke.gov.uk
Rooksdowndown Reporter	Editor@rooksdowndown.org.uk
Hampshire Healthcare Centre	Tel: 01256 477720
Rooksdowndown Pharmacy	Tel: 01256 320303
Member of Parliament Maria Miller	Tel: 02072 195749
Hampshire County Council	Tel: 01962 841841
Basingstoke & Deane Borough Council	Tel: 01256 844844
Trading Standards Rapid Response	Tel: 01962 946232
Bus Enquiries (Basingstoke)	Tel: 01256 464501
North Hampshire Hospital	Tel: 01256 473202
Electricity Emergency	Tel: 0845 770 8090
Gas Emergency	Tel: 0800 111 999
Water Emergency	Tel: 0845 602 1724
Castle Hill Junior School	Tel: 01256 473777
Winklebury Junior School	Tel: 01256 323244
Library Van Information	Tel: 01256 844844
Community Fire Safety Dept	Tel: 02380 626809
Graffiti & Fly Tipping	Tel: 01256 844844
Crimestoppers	Tel: 0800 555 111

ROOKSDOWN MEETINGS FOR 2010

ROOKSDOWN PARISH COUNCIL MEETINGS 2010

Saxon Wood School at 7.30pm

Monday 28 June
 Monday 26 July
 Monday 27 September
 Monday 25 October
 Monday 22 November

ROOKSDOWN COMMUNITY ASSOCIATION MEETINGS 2010

Saxon Wood School at 7.30pm

Wednesday 28 July
 Tuesday 28 September
 Wednesday 20 October
 Tuesday 23 November



Big Wheel 16 Bike Ride

Sunday 18th July 2010

Sponsored by Computer 2000



St. Michael's Hospice is looking for local cyclists to take part in its annual sponsored Big Wheel Bike Ride on Sunday 18th July. There is a choice of routes 5 miles, 25 miles or 50 miles.

Entry fees: Adults £15.00, Children £7.50, Family £40.00, Tandem £25

Sign up early to save money! On the day fee's Adults £20, Children £10

Riders will be setting off between 9:00am - 10:30am from Down Grange Sports Complex, Pack Lane, Basingstoke.

It easy to register on the Hospice website www.stmichaelshospice.org.uk/events or call the fundraising team on 01256 848848 for a registration form.

ROOKSDOWN EVENTS 2010

ROOKSDOWN SUMMER FAYRE SATURDAY 10 JULY

Mill Road Green
2.00pm to 4.00pm

Would you like to have a stall at the Summer Fayre or help run a game or activity we would love your help or your ideas.

Please call Jayne 07891530444 or

Email: Rooksdwn.Community@hotmail.co.uk

ROOKSDOWN SUMMER GAMES

SUMMER GAMES ON MILL ROAD GREEN run by WCF AGE 5-12 Years (Flexible)

10.00 to 12.00pm



Tuesday 27 July
Tuesday 3 August
Tuesday 10 August
Tuesday 17 August
Tuesday 24 August

ROOKSDOWN FOOTBALL SESSIONS

FOOTBALL GAMES ON MILL ROAD GREEN

We are going to run Football Sessions on Mill Road Green one afternoon a week during the Summer Holidays.

Unfortunately the dates have still to be arranged

Please see noticeboards, website and flyers for details.

